

CLE-LINE®

Hole Saws



M3



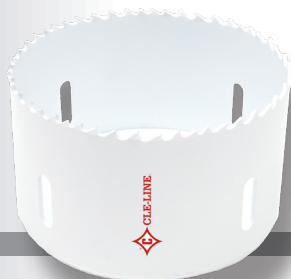
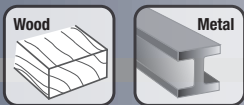
M42



**CLAW
Fleam
Ground**



You *SAW* it here!



- **Tooth Configuration** 4/6 variable
- ***1-7/8" (48mm) depth of cut**
- **Thin kerf design** 0.050" thickness for faster cutting, prolongs battery life with cordless tools.
- **Thick Heavy-Duty Backing Plate** 3/16" (5mm) eliminates need for drive plate.

**Unless noted otherwise*

- Traditional narrow openings on the side wall
- High speed cutting edge
- Shock resistant teeth, resists tooth strippage, less vibration, cuts 30% faster than conventional saws.
- Creates holes for pipe, tubing, door lock installations, electrical conduits, and antennas.
- Ideal for plumbing, construction, aircraft, electrical, maintenance and automotive applications.
- Use in steel, aluminum, brass, cast iron, plastic or wood.

inch (mm)	M3 order no.	M42 order no.
9/16" (14 mm)	C25058	C25000
5/8" (16 mm)	C26149	C26121
11/16" (17 mm)	C26102	C25002
3/4" (19 mm)	C25061	C26113
(20 mm)	C25062	C25004
13/16" (21 mm)	C26106	C26105
7/8" (22 mm)	C25064	C25006
*7/8" (22 mm)	C24998	C24999
15/16" (24 mm)	C25065	C25007
1" (25 mm)	C25066	C26101
1-1/16" (27 mm)	C25067	C25009
1-1/8" (29 mm)	C25068	C26103
1-3/16" (30 mm)	C25069	C25011
1-1/4" (32 mm)	C25070	C25012
1-5/16" (33 mm)	C25071	C25013
1-3/8" (35 mm)	C26108	C25014
1-7/16" (37 mm)	C25073	C25015
1-1/2" (38 mm)	C25074	C25016
1-9/16" (40 mm)	C25075	C25017
1-5/8" (41 mm)	C25076	C25018
1-11/16" (43 mm)	C25077	C26104
1-3/4" (44 mm)	C25078	C26107
(45 mm)	C26120	C25021
1-13/16" (46 mm)	C25080	C25022
1-7/8" (48 mm)	C25081	C25023
(50 mm)	C25082	C25024
2" (51 mm)	C25083	C25025
2-1/16" (52 mm)	C25084	C25026
2-1/8" (54 mm)	C25085	C25027
(55 mm)	C25086	C25028

inch (mm)	M3 order no.	M42 order no.
2-1/4" (57 mm)	C26109	C25029
2-5/16" (59 mm)	C25088	C25030
2-3/8" (60 mm)	C25089	C25031
2-1/2" (64 mm)	C25090	C25032
2-9/16" (65 mm)	C25091	C25033
2-5/8" (67 mm)	C25092	C26111
(68 mm)	C25093	C25035
2-3/4" (70mm)	C26110	C25036
2-7/8" (73 mm)	C26112	C25037
(75 mm)	C25096	C25038
3" (76 mm)	C25097	C25039
3-1/8" (79 mm)	C25098	C25040
3-1/4" (83 mm)	C25099	C26115
3-3/8" (86 mm)	C26116	C25042
3-1/2" (89 mm)	C25001	C25043
3-5/8" (92 mm)	C25102	C25044
3-3/4" (95 mm)	C25103	C25045
3-7/8" (98 mm)	C25104	C25046
(100 mm)	C25105	C25047
4" (102 mm)	C25106	C25048
4-1/8" (105 mm)	C25107	C25049
4-1/4" (108 mm)	C26118	C25050
4-3/8" (111 mm)	C25109	C25051
4-1/2" (114 mm)	C26117	C25052
4-3/4" (121 mm)	C25111	C26119
5" (127 mm)	C25112	C25054
5-1/2" (140 mm)	C25113	C25055
5-3/4" (146 mm)	C25114	C25056
6" (152 mm)	C25115	C25057

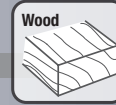
See back cover for accessories.

M42 Hole Saw Kits



M42 Sets	order no.
Handyman's - 7 piece (includes 1 mandrel and 1 adapter) 7/8"(22mm), 1"(25mm), 1-1/8"(29mm), 1-1/4"(32mm), 1-1/2"(38mm)	CHK01
Locksmith's - 9 piece (includes 2 mandrels and 1 adapter) 7/8"(22mm), 1"(25mm), 1-1/4"(32mm), 1-1/2"(38mm), 1-3/4"(44mm), 2-1/8"(54mm)	CHK02
Plumber's - 9 piece (includes 2 mandrels and 1 adapter) 3/4"(19mm), 7/8"(22mm), 1-1/8"(29mm), 1-1/2"(38mm), 1-3/4"(44mm), 2-1/4"(57mm)	CHK03
Electrician's - 9 piece (includes 2 mandrels and 1 adapter) 7/8"(22mm), 1-1/8"(29mm), 1-3/8"(35mm), 1-3/4"(44mm), 2"(51mm), 2-1/2"(64mm)	CHK04
Electrician's, Metric - 9 piece (includes 2 mandrels and 1 adapter) 16mm(5/8"), 20mm, 25mm(1"), 32mm(1-1/4"), 40mm(1-9/16"), 51mm(2")	CHK05
Journeyman's - 13 piece (includes 2 mandrels, 1 pilot hole drill, and 1 adapter) 3/4"(19mm), 7/8"(22mm), 1-1/8"(29mm), 1-3/8"(35mm), 1-1/2"(38mm), 1-3/4"(44mm), 2"(51mm), 2-1/4"(57mm), 2-1/2"(64mm)	CHK06

*1-1/2" (32mm) cutting depth



"You need **speed** and a **smooth** finish ...
Cle-Line **CLAW** delivers."

Teeth Comparison

Cle-Line CLAW



Traditional M-42



Heavy Duty Cutting

Up to **40% faster** than traditional bi-metal hole saws and a longer working life

Turtle Back Tooth

Reinforced tooth back

Easy Plug Removal

Triple slot design makes plug removal easier.

Gullets

Designed deeper for faster chip removal.

Size Range:

9/16" to 6"

1-7/8" (48mm) depth of cut

- CLAW has a cutting edge made from M42 cobalt steel.
- Shock resistant teeth
- Reduces tooth strippage
- 4/6 positive tooth
- Less vibration



inch (mm)	order no.
9/16" (14mm)	C43100
5/8" (16mm)	C43101
11/16" (17mm)	C43102
3/4" (19mm)	C43103
20mm	C43104
13/16" (21mm)	C43105
7/8" (22mm)	C43106
15/16" (24mm)	C43107
1" (25mm)	C43108
1-1/16" (27mm)	C43109
1-1/8" (29mm)	C43110
1-3/16" (30mm)	C43111
1-1/4" (32mm)	C43112
1-5/16" (33mm)	C43113
1-3/8" (35mm)	C43114
1-7/16" (37mm)	C43115
1-1/2" (38mm)	C43116
1-9/16" (40mm)	C43117
1-5/8" (41mm)	C43118
1-11/16" (43mm)	C43119

inch (mm)	order no.
1-3/4" (44mm)	C43120
45mm	C43121
1-13/16" (46mm)	C43122
1-7/8" (48mm)	C43123
50mm	C43124
2" (51mm)	C43125
2-1/16" (52mm)	C43126
2-1/8" (54mm)	C43127
55mm	C43128
2-1/4" (57mm)	C43129
2-5/16" (59mm)	C43130
2-3/8" (60mm)	C43131
2-1/2" (64mm)	C43132
2-9/16" (65mm)	C43133
2-5/8" (67mm)	C43134
68mm	C43135
2-3/4" (70mm)	C43136
2-7/8" (73mm)	C43137
75mm	C43138
3" (76mm)	C43139

inch (mm)	order no.
3-1/8" (79mm)	C43140
3-1/4" (83mm)	C43141
3-3/8" (86mm)	C43142
3-1/2" (89mm)	C43143
3-5/8" (92mm)	C43144
3-3/4" (95mm)	C43145
3-7/8" (98mm)	C43146
100mm	C43147
4" (102mm)	C43148
4-1/8" (105mm)	C43149
4-1/4" (108mm)	C43150
4-3/8" (111mm)	C43151
4-1/2" (114mm)	C43152
4-3/4" (121mm)	C43153
5" (127mm)	C43154
5-1/2" (140mm)	C43155
5-3/4" (146mm)	C43156
6" (152mm)	C43157

See back cover for accessories.

Sets	order no.
Handyman's - 7 piece (includes 1 mandrel and 1 adapter) 7/8" (22mm), 1" (25mm), 1-1/8" (29mm), 1-1/4" (32mm), 1-1/2" (38mm)	C43158
Locksmith's - 9 piece (includes 2 mandrels and 1 adapter) 7/8" (22mm), 1" (25mm), 1-1/4" (32mm), 1-1/2" (38mm), 1-3/4" (44mm), 2-1/8" (54mm)	C43159
Plumber's - 9 piece (includes 2 mandrels and 1 adapter) 3/4" (19mm), 7/8" (22mm), 1-1/8" (29mm), 1-1/2" (38mm), 1-3/4" (44mm), 2-1/4" (57mm)	C43160
Electrician's - 9 piece (includes 2 mandrels and 1 adapter) 7/8" (22mm), 1-1/8" (29mm), 1-3/8" (35mm), 1-3/4" (44mm), 2" (51mm), 2-1/2" (64mm)	C43161
Electrician's, Metric - 9 piece (includes 2 mandrels and 1 adapter) 16mm(5/8"), 20mm, 25mm(1"), 32mm(1-1/4"), 40mm(1-9/16"), 51mm(2")	C43162
Journeyman's - 13 piece (includes 2 mandrels, 1 pilot hole drill, and 1 adapter) 3/4" (19mm), 7/8" (22mm), 1-1/8" (29mm), 1-3/8" (35mm), 1-1/2" (38mm), 1-3/4" (44mm), 2" (51mm), 2-1/4" (57mm), 2-1/2" (64mm)	C43163



Hole Saw Accessories

Fits M3, M42, and *CLAW*

Mandrel / Arbor	Part No.	Pilot Drills	Part No.
1/4" dia. (round shank) fits Hole Saw 9/16" up to 1-3/16"	C25116	Pilot Hole Drill (1/4" dia. x 3-1/4") (2 per package)	C25123
3/8" dia. (hex shank) fits Hole Saw 9/16" up to 1-3/16"	C25118	Pilot Hole Drill (1/4" dia. x 4") (2 per package)	C25124
3/8" dia. (hex shank) fits Hole Saw 1-1/4" up to 6"	C26195		
3/8" dia. (hex shank pinned) fits Hole Saw 1-1/4" up to 6"	C26198	Adapter	Part No.
7/16" dia. (hex shank) fits Hole Saw 9/16" up to 1-3/16"	C25119	1-1/4" - 6"	C26196
7/16" dia. (hex shank pinned) fits Hole Saw 1-1/4" up to 6"	C25121	Hole Saw Arbor Extension	Part No.
7/16" dia. (hex shank) fits Hole Saw 1-1/4" up to 6"	C26197	7/16" x 12" (18mm dia. x 302mm)	C26199

You **SAW** it here!

Call for more information on:

Bi-Metal Reciprocating Blades,
Portable Band Saw Blades,
Weld-to-Length Band Saw Blades,
and our **New** Carbide Tipped
Band Saw Blade



2501 Davis Creek Road, Seneca, SC 29678 U.S.A.

USA
website www.gfii.com
telephone 800.348.2885
fax 800.892.4290

email standard.distributors@gfii.com

International
telephone 864.653.3904

email international.distributors@gfii.com

Canada
www.gfii.ca
800.348.2885
800.387.6649
email canada.distributors@gfii.com



FLYERCLESAW